

# Quick Installation Guide

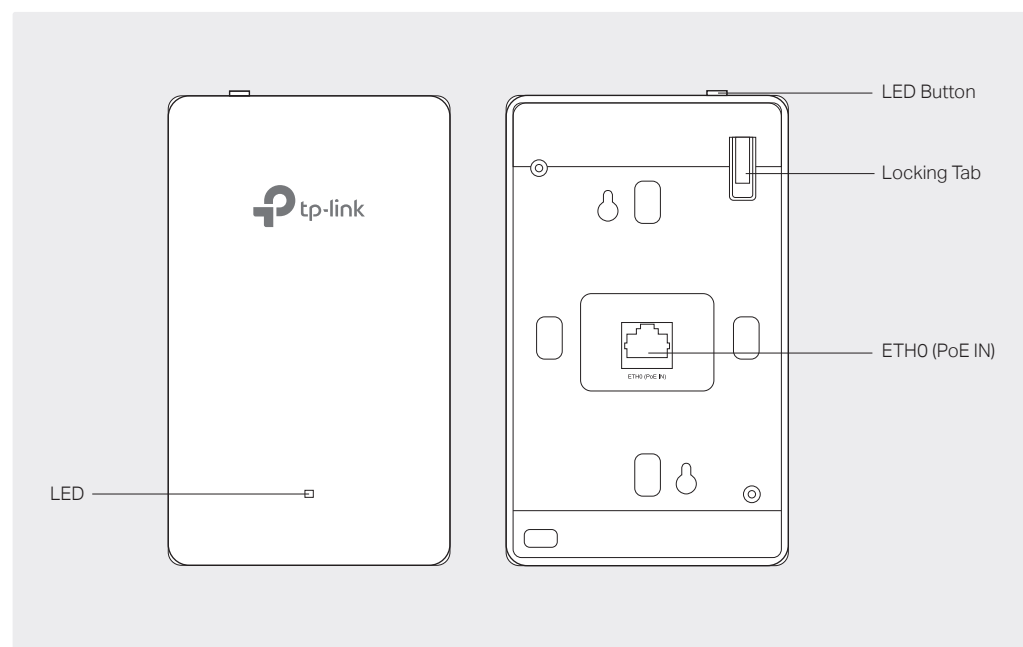
## Wall Plate Access Point

**Note:** Festa F52-Wall is used as an example throughout the Guide. Images may differ from your actual product.

©2024 TP-Link 7106511097 REV1.0.0

## 1 Hardware Overview

### Front Panel & Rear Panel



#### LED Indicator

**On:** Working normally/Initializing.

**Off:** Working abnormally/Power off/LED is turned off.

**Flash:**

- **Flash twice:** Initialization is completed.
- **Flash once per second:** The AP is upgrading.
- **Flash quickly:** The AP is resetting, or the Festa controller is locating the device\*.

\* When the Locate feature is activated in the Festa controller, the LED will flash quickly for 10 minutes to help you locate and identify the device. You can disable this feature manually to stop the device from flashing.

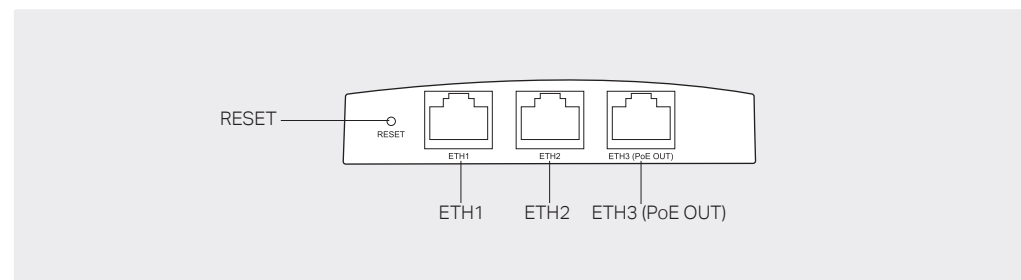
#### ETH0 (PoE IN) Port

Connected to a PSE (Power Sourcing Equipment), such as a PoE switch, for both data transmission and Power. The PSE supports 802.3af/at inputs and complies with Power Source Class 2 (PS2) or Limited Power Source (LPS) defined in the standard of IEC 62368-1.

#### LED Button

Press the LED button to turn on/off the LED.

## Bottom View



#### RESET Button

With the device powered on, press and hold the button for about 5 seconds until the LED flashes, then release the button. The device will restore to its factory defaults.

#### ETH1 & ETH2 Port

Connected to a client device to transmit data.

#### ETH3 (PoE OUT) Port

Connected to a client device to transmit data and supply power (PoE Passthrough). The PoE OUT feature requires 802.3af PoE+ input.

**Note:** To power an 802.3af device in the LAN, you must use 802.3af PoE+ input.

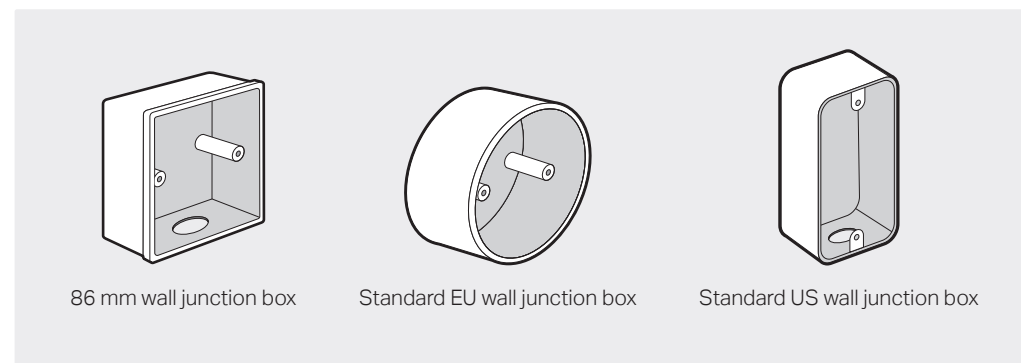
## 2 Pre-Installation Checklist

Before installation, be sure that you have the following items:

- A pre-installed wall junction box
- An RJ45 plug
- A Phillips screwdriver
- A PoE switch

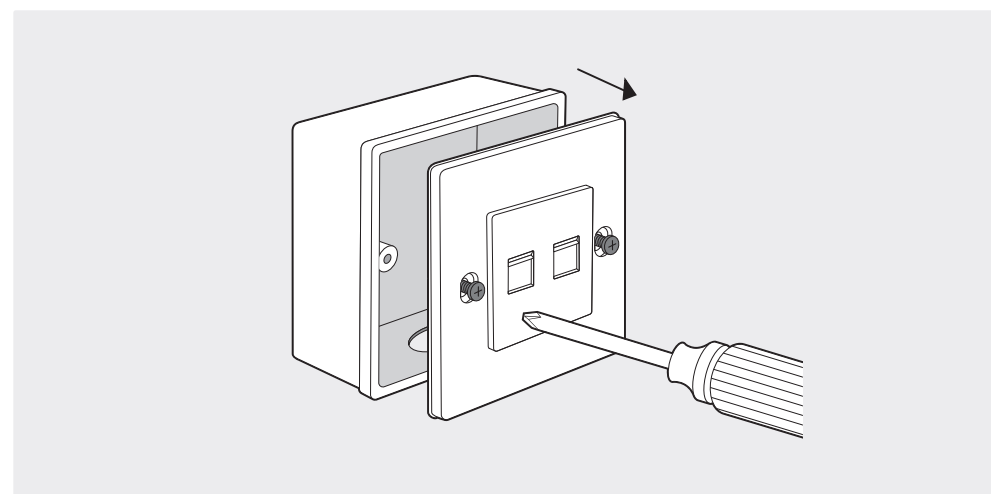
## 3 Installation Steps

The AP can be mounted into an 86 mm wall junction box, a standard EU wall junction box, or a standard US wall junction box. The junction box should be pre-installed with a running-in-wall Ethernet cable connected to a PoE switch.

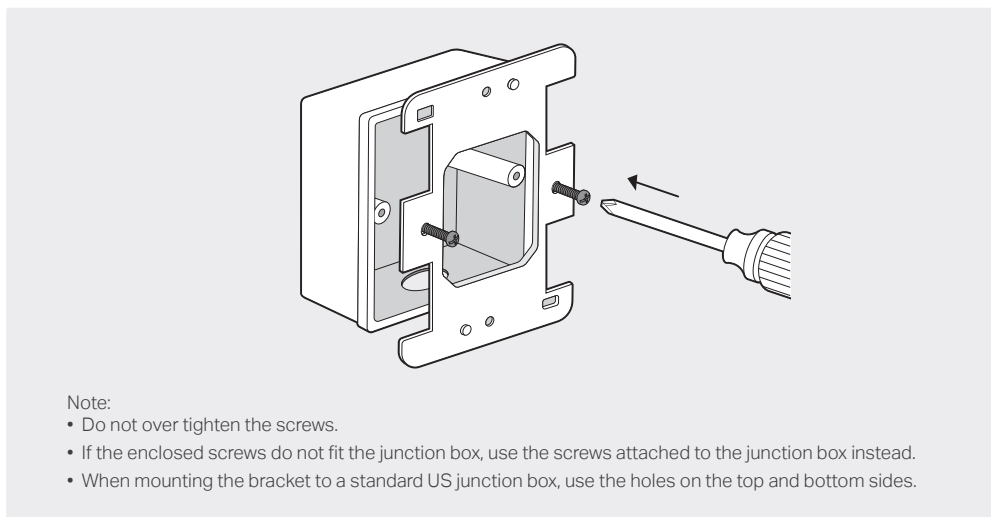


**Note:** For simplicity, the 86 mm wall junction box is used as an example below.

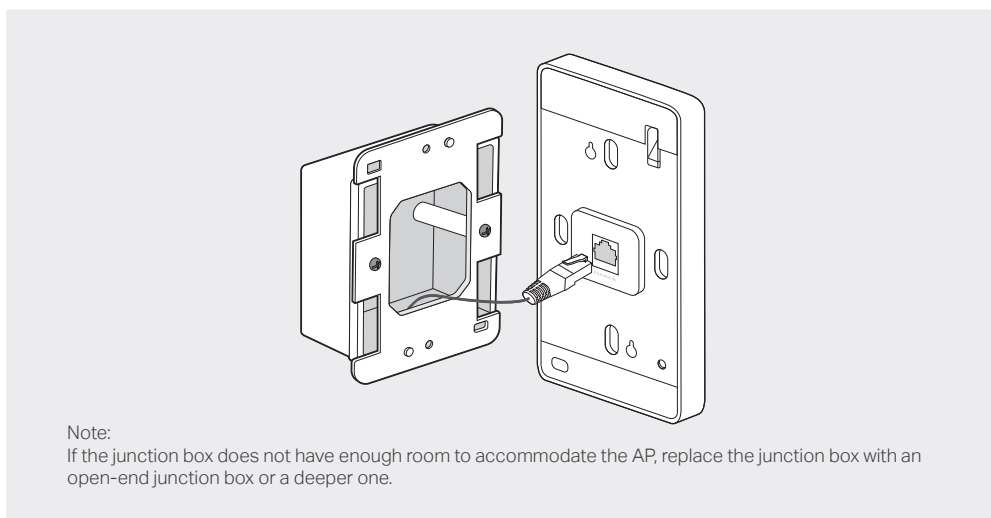
1. Detach the faceplate of the junction box with a Phillips screwdriver.



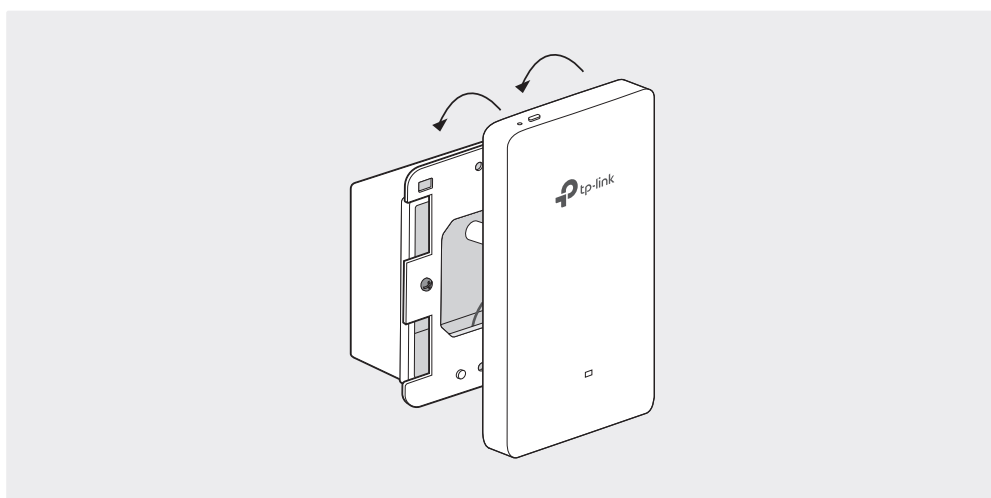
2. Insert the enclosed screws and tighten them with a Philips screwdriver to secure the mounting bracket.



3. Connect the Ethernet cable inside the junction box to an RJ45 plug. Then connect the cable to the ETH0 (PoE IN) port. Position the Ethernet cable to ensure it is not strained.

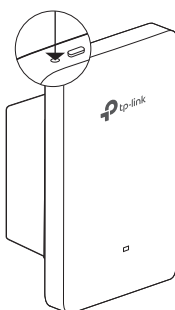


4. Attach the AP to the mounting bracket by aligning the two mounting studs on the mounting bracket with the large opening of the slots on the AP. Press and slide the AP down until it locks into place.



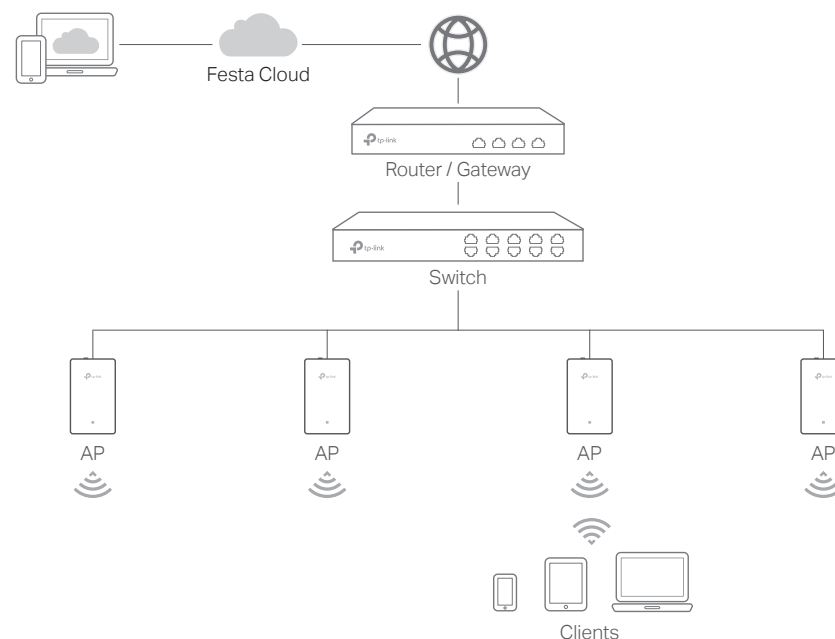
**Tip:**

To remove the AP from the mounting bracket, insert a paper clip into the hole next to the LED button to release the Locking Tab. Slide the AP upwards and pull it out to detach it from the mounting bracket.



## 4 Software Configuration

You can configure and manage Festa APs via the Festa Cloud-Based Controller.



### Option 1: Via Web Browser

1. Make sure that your management device can access the internet.
2. Launch a web browser and enter <https://festa.tplinkcloud.com> in the address bar. Log in with your TP-Link ID.




3. Click **+ Add Controller**, then you will see you have successfully registered for a Cloud-Based Controller and the controller has been added to the controller list.
4. Click **Set Up Now**, click **Config New Setup**, and follow the step-by-step instructions to complete the configuration wizard of the controller.
5. On the controller's management page, go to **Devices**, click **+ Add Devices**, and follow the step-by-step instructions to adopt Festa devices.

Now you can configure and manage Festa devices on the controller.


### Option 2: Via Festa App

1. Download and install the Festa App from App Store or Google Play.
 




Download on the  
App Store

OR



Scan for Festa App



Festa App
2. Launch the Festa App and log in with your TP-Link ID.
3. Tap **+** on the upper right corner, then you will see you have successfully registered for a Cloud-Based Controller and the controller has been added to the controller list.
4. Tap **Confirm**, tap **Let's Get Started**, and follow the step-by-step instructions to complete the configuration wizard of the controller.
5. On the controller's management page, go to **Devices**, click **+** on the upper right corner, and follow the step-by-step instructions to adopt Festa devices.

Now you can configure and manage Festa devices via the Festa App.

**Safety Information**

- Keep the device away from water, fire, humidity or hot environments.
- Do not attempt to disassemble, repair, or modify the device. If you need service, please contact us.
- Do not use the device where wireless devices are not allowed.

TP-Link hereby declares that the device is in compliance with the essential requirements and other relevant provisions of directives 2014/53/EU, 2011/65/EU and (EU)2015/863.

The original EU Declaration of Conformity may be found at <https://www.tp-link.com/en/support/ce/>

TP-Link hereby declares that the device is in compliance with the essential requirements and other relevant provisions of the Radio Equipment Regulations 2017.

The original UK Declaration of Conformity may be found at <https://www.tp-link.com/support/ukca/>

For detailed configurations, refer to the User Guide of the controller. The guide can be found on the download center of our official website: <https://www.tp-link.com/support/download/?type=smb>.

To ask questions, find answers, and communicate with TP-Link users or engineers, please visit <https://community.tp-link.com/business> to join TP-Link Community.

For technical support, the user guide and other information, please visit <https://www.tp-link.com/support/?type=smb>, or simply scan the QR code.

