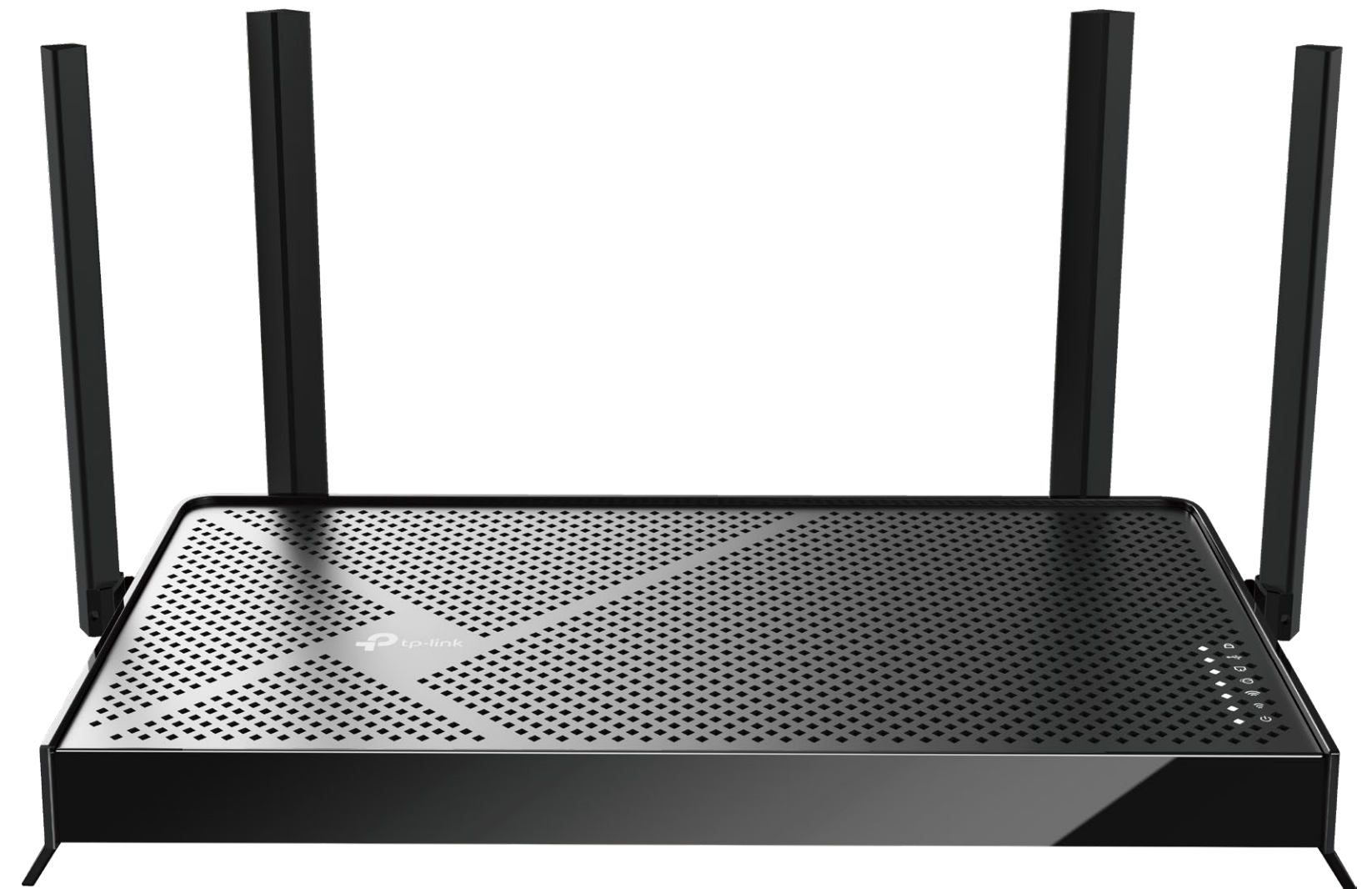




Wi-Fi 7

BE3600 Dual-Band Wi-Fi 7 Router

Exploring the new Era of Home Wi-Fi



Archer BE230

Lightning-Fast Speeds
3.6 Gbps Dual-Band Wi-Fi 7†

2.5G Multi-Gig Connectivity
2× 2.5 Gbps Ports Boost Wired Connections[§]




Far-Reaching Coverage
4× External Antennas with Beamforming

Ultra Smooth Wi-Fi
Lower Latency for Lag-Free Gaming†

Highlights

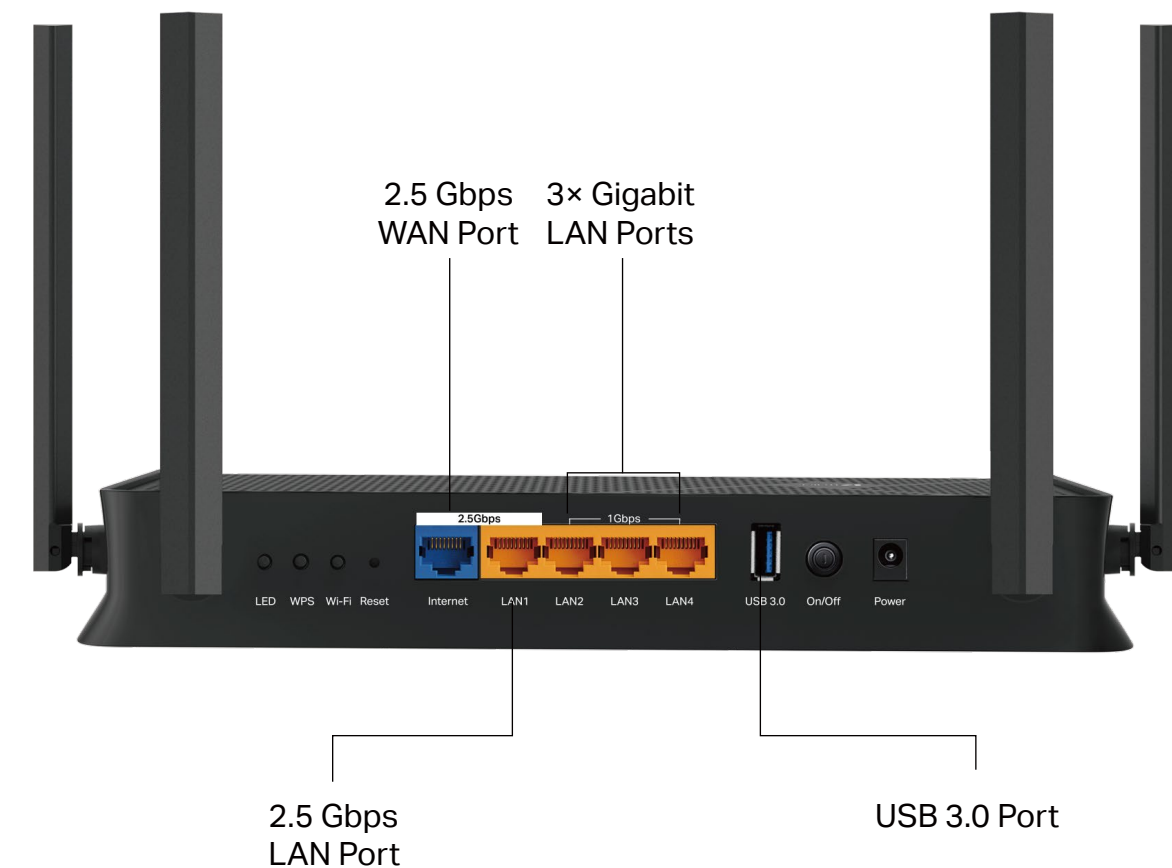
Wi-Fi 7 — Wi-Fi Like Never Before



-  **3.6 Gbps Dual-Band Wi-Fi 7[†]**
3.6 Gbps Wi-Fi 7 speeds enables you to enjoy full access to 8K streaming and high-speed downloading.[†]
-  **Lightning-Fast Speeds to Power Your Devices**
Multi-Link Operation (MLO) enables Archer BE230 to transmit data with Wi-Fi 7 clients across the 5 GHz band and the 2.4 GHz band simultaneously, offering higher speed, lower latency, and more reliability.
-  **Higher Capacity for More Devices[†]**
Communicates with multiple devices via 4 streams and dual-band simultaneously. Combined with the powerful CPU, Wi-Fi 7 provides congestion-free signals to your laptop, TV, thermostat, and baby monitor.

Highlights

Archer BE230 — Exploring the new Era of Home Wi-Fi



2× 2.5 Gbps Ports for Multi-Gigabit Connectivity

The 2.5 Gbps WAN port makes full use of gigabit speeds from your local ISP. Break through the 1G bottleneck and drive your devices to peak performance. The additional 2.5 Gbps LAN port and the USB 3.0 port make Archer BE230 an ideal solution for future-proofing your home network.[§]

Far-Reaching Wi-Fi Coverage

4× high-performance external antennas, proprietary Wi-Fi optimization, and Beamforming technology deliver broader coverage, more capacity, stronger and more reliable connections, and less interference.

Highlights

TP-Link HomeShield

Manage online time and block inappropriate content to keep your family safe online with Parental Controls. Network Protection further keeps your home network safe by preventing potential threats and security issues.**



Network Protection



Parental Controls



Quality of Service (QoS)



Comprehensive Reports

Great Compatibility

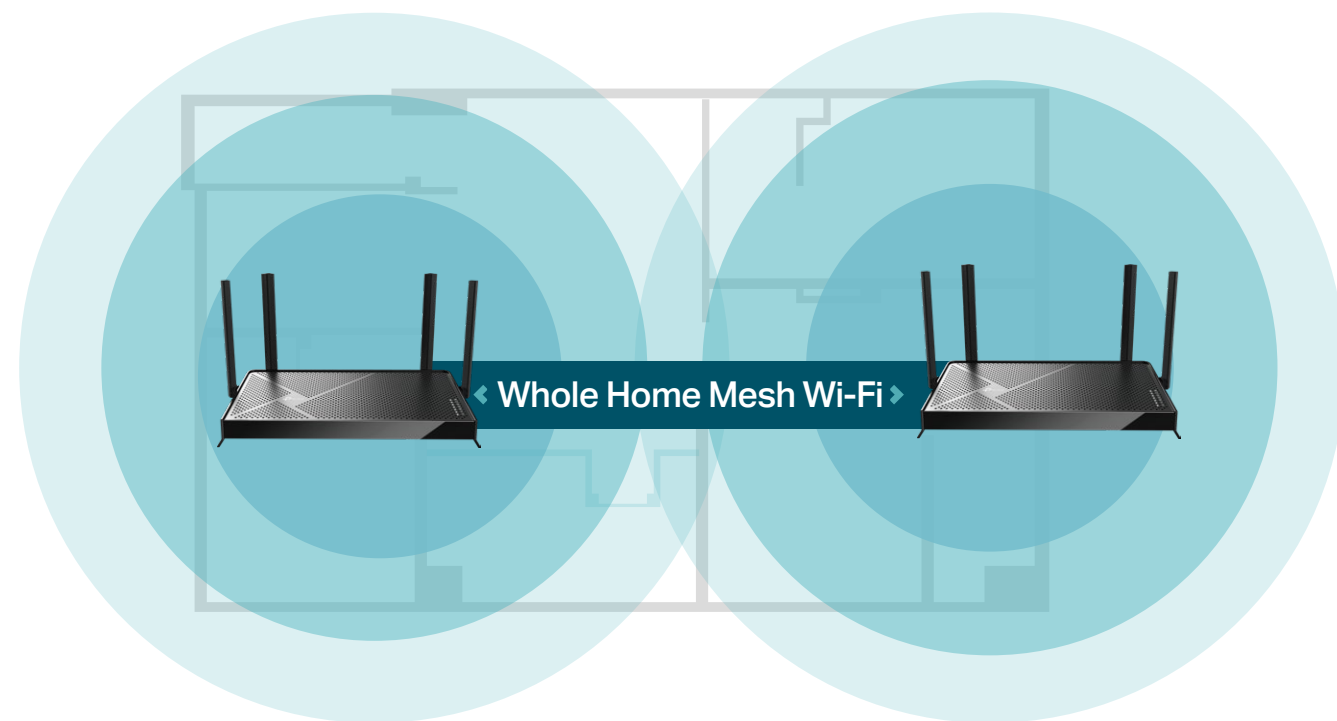
Take your Wi-Fi to the next level without worry. Archer BE230 offers great compatibility by working with all Wi-Fi generations, devices, and internet service providers.* It also works with Google Assistant.



Highlights

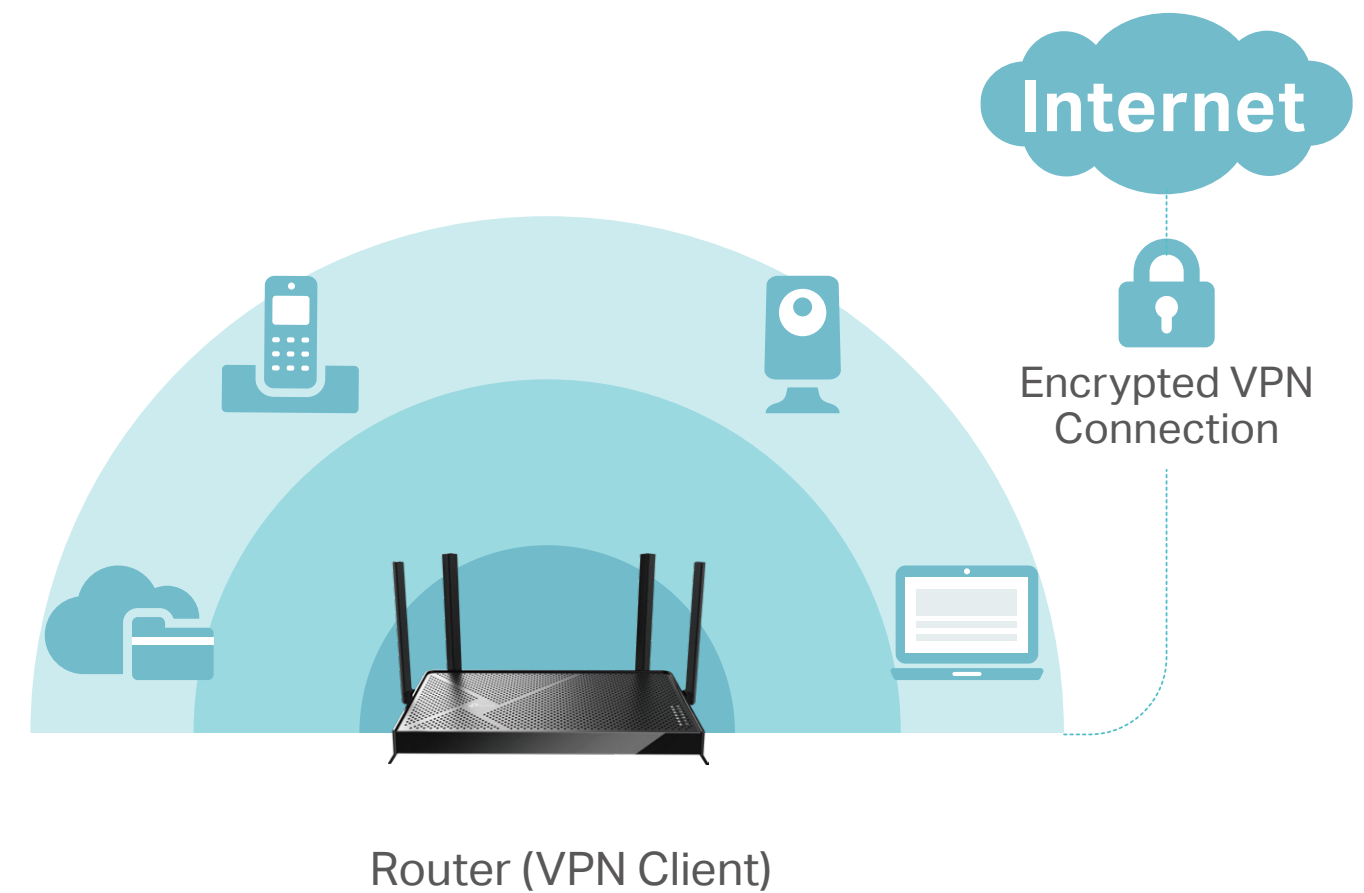
Flexible Whole Home Wi-Fi

Archer BE230 is compatible with EasyMesh to form seamless whole home mesh Wi-Fi, preventing drops and lag when moving between signals. Enjoy uninterrupted streaming when moving around your home.***



VPN Client Support

Archer BE230 allows specified devices on your home network to access remote VPN servers without needing to install VPN software on every device. Archer BE230 can also run a VPN and ordinary internet connections at the same time for added security and flexibility.



Features



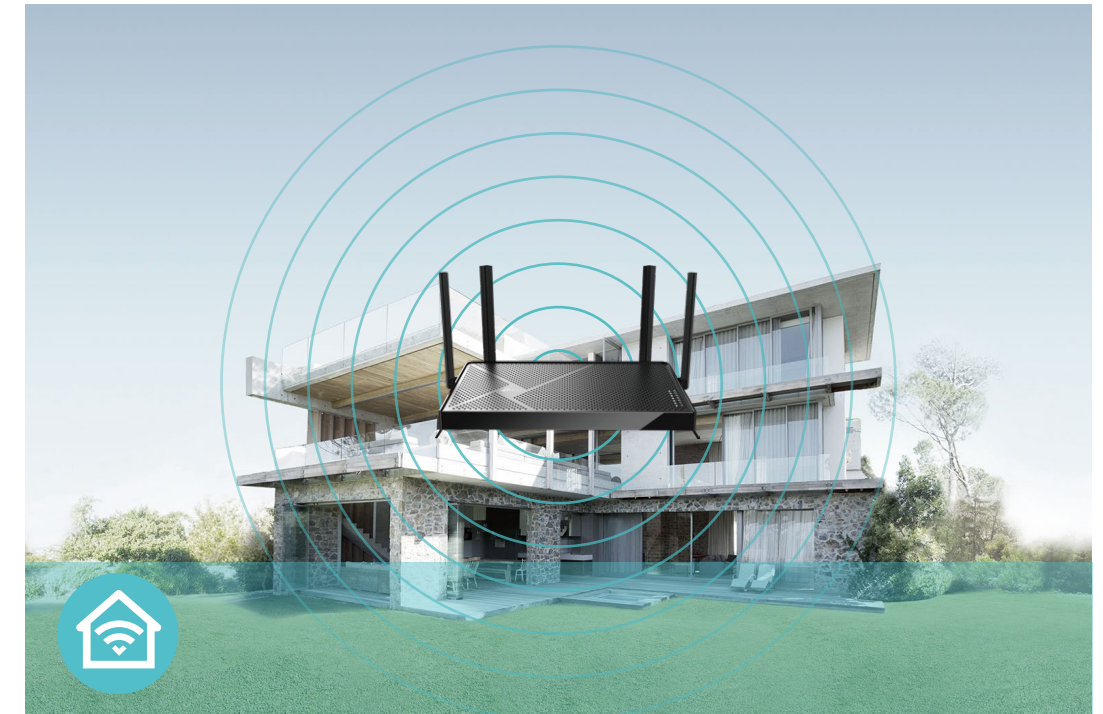
Ultra-Fast Speed

- **BE3600 Wi-Fi** – Up to 3570 Mbps dual-band Wi-Fi 7 enables gaming, streaming and high-speed downloading on multiple devices—all at the same time[†]
- **2x 2.5G Ports** – One 2.5 Gbps Internet port and one 2.5 Gbps LAN port break through the 1G bottleneck, driving your devices to peak performance.
- **Wi-Fi 7** – Wi-Fi 7 (802.11be) features advanced technology 4K QAM, drastically increasing the speed and efficiency of your entire network.[◇]
- **Smart Connect** – Intelligently assigns each device to the best Wi-Fi band for optimal performance.



Reliable Connections

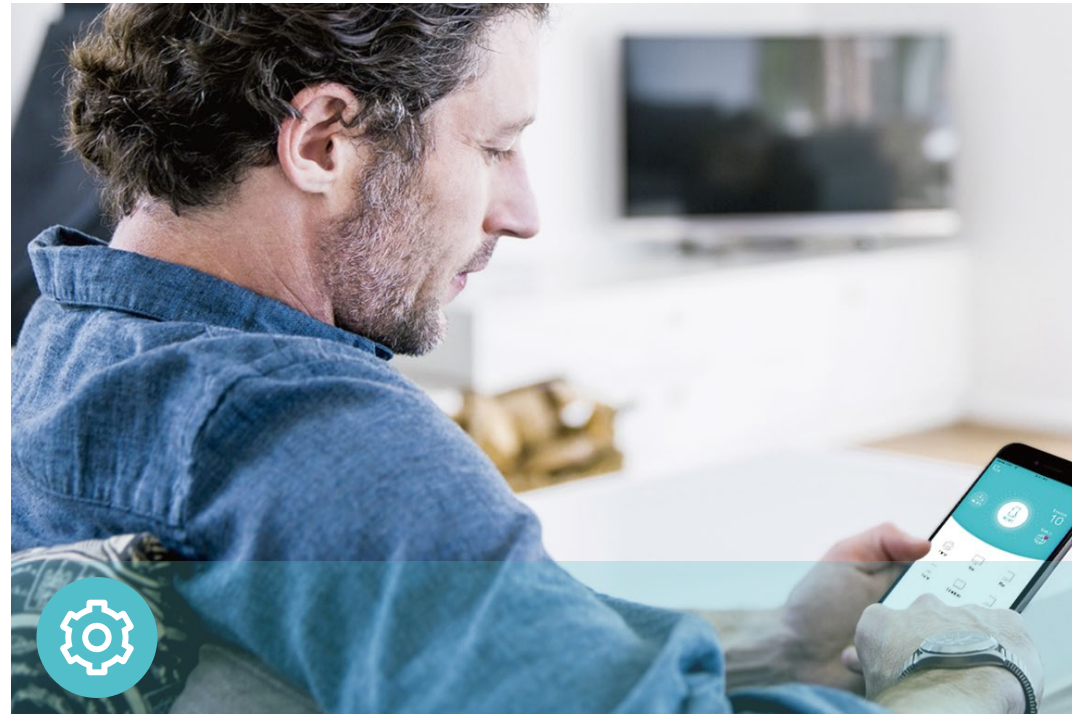
- **3570 Mbps Dual-Band WiFi 7** – Enables your devices to run at full speed. Enjoy fluent 4K/8K streaming, immersive AR/VR gaming, and blazing-fast downloads.[†]
- **Airtime Fairness** – Balances bandwidth of connected devices to improve overall throughput and efficiency.



Broad Wi-Fi Range

- **Ultimate Range Wi-Fi** – Proprietary WiFi optimization and 4x high-performance external antennas boost WiFi signals throughout your home.
- **Beamforming Technology** – Concentrates Wi-Fi signals towards individual devices to ensure stronger connections.
- **Seamless EasyMesh network** – Transfer between seamless whole-home Wi-Fi without any drops or lag and manage your whole network using a centralized panel.

Features



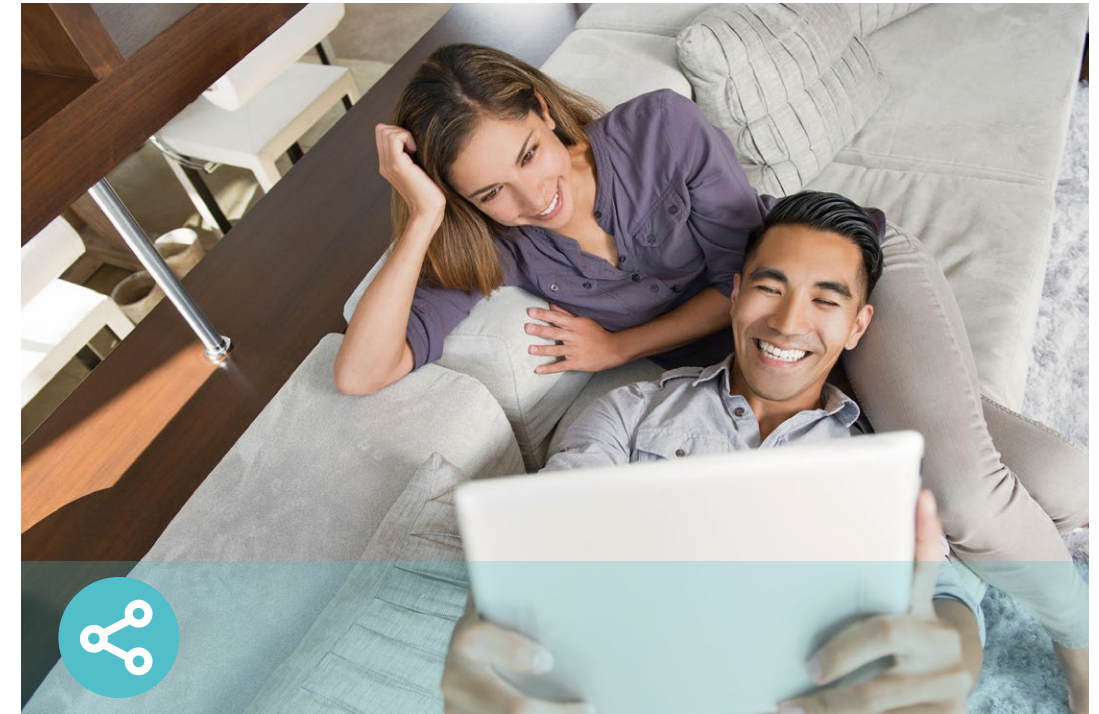
Ease of Use

- Hassle-free Management with Tether App – Network management is made easy with the TP-Link Tether app, available on any Android and iOS device.
- Intuitive Web UI – Ensures quick and simple installation without hassle.
- WPS (Wi-Fi Protected Setup) – Help you to quickly and securely connect your devices to the router's network with a tap.
- Backwards Compatible – Take your Wi-Fi to the next level while being backwards compatible with existing 802.11 a/b/g/n/ac/ax Wi-Fi standards.
- Works with Google Assistant – Utilize Google Assistant to control everything via voice commands to enjoy truly intelligent life.



Robust Security

- HomeShield – TP-Link's premium security services keep your home network safe with cutting-edge features for network and IoT protection.**
- Parental Controls – Manage online time and block inappropriate content to control your family's digital habits.
- Guest Network – Provides separate access for guests to secure the home network.
- Advanced WPA3 Encryptions – The latest WiFi security protocol, WPA3, brings new capabilities to improve cybersecurity in personal networks.*
- Access Control – Establishes an allow list or a deny list to allow or restrict certain devices to access the internet.



Value-Added Features

- VPN Clients and Server Supported – With VPN client support, BE230 allows specified devices in your home network to access remote VPN servers without needing to install VPN software on every device.
- USB Port – Connects external storage devices to rapidly share files, photos, and videos.
- Built-in Media Server – Allows you to play music, watch videos and view photos from any device on your network.
- More Values – Advanced functions like IPTV, IPv6 compatibility, and Access Point mode bring more values.

Specifications

Wireless

- Standards: IEEE 802.11be/ax/ac/n/a 5 GHz, IEEE 802.11be/ax/n/g/b 2.4 GHz
- WiFi Speeds: 2882 Mbps (5 GHz) + 688 Mbps (2.4 GHz)[†]
- WiFi Range: 4× High-Performance Antennas
- WiFi 7 Features: Multi-Link Operation (MLO), 4K-QAM, and Multi-RUs
- Working Modes: Router Mode, Access Point Mode

Hardware

- Ethernet Ports: 1× 2.5 Gbps WAN Port + 1× 2.5 Gbps LAN Port + 3 x 1 Gbps LAN Ports
- USB Support: 1× USB 3.0 Port
- Buttons: Power On/Off Button, Reset Button, WPS Button, Wi-Fi Button, LED Button

Security

- WiFi Encryption: WPA, WPA2, WPA3, WPA/WPA2-Enterprise (802.1x)
- Network Security: SPI Firewall, Access Control, IP & MAC Binding, Application Layer Gateway, HomeShield Security
- Guest Network:
5GHz Guest Network, 2.4 GHz Guest Network
- VPN Server: OpenVPN, PPTP, L2TP VPN Server, Wireguard VPN
- VPN Client: OpenVPN, PPTP, L2TP VPN Client, Wireguard VPN

Software

- Protocols: IPv4, IPv6
- Service Kits: HomeShield
- EasyMesh: Supported
- Parental Controls: HomeShield Parental Controls
- WAN Types: Dynamic IP, Static IP, PPPoE, PPTP, L2TP
- Quality of Service: QoS by Device
- Cloud Service: Auto Firmware Upgrade, TP-Link ID, DDNS
- NAT Forwarding: Port Forwarding, Port Triggering, DMZ, UPnP
- DDNS: TP-Link, NO-IP, DynDNS

Specifications

Physical

· Dimensions: 10.7 × 5.8 × 1.6 in (272.7 × 147 × 41.7 mm)

· Package Contents:

Wi-Fi 7 Router Archer BE230

Power Adapter

RJ45 Ethernet Cable

Quick Installation Guide

Other

· System Requirements:

Microsoft Edge, Firefox, Chrome, Safari, or other

JavaScript-enabled browser

*You are recommended to use the latest version

Cable or DSL Modem (if needed)

Subscription with an internet service provider (for internet access)

· Certifications: FCC, CE, RoHS

· Environment:

Operating Temperature: 0°C ~40°C (32°F ~104°F)

Operating Humidity: 10%~90% non-condensing

Test Data

· WiFi Transmission Power:

FCC: ≤ 30 dBm (2.4 GHz), ≤ 30 dBm (5 GHz)

CE: ≤20dBm EIRP (2.4GHz); ≤23dBm EIRP (5.17GHz~5.35GHz);
≤30dBm EIRP (5.47GHz~5.725GHz)

· WiFi Reception Sensitivity:

2.4 GHz:

11ax HE20 MCS0: -97dBm, 11ax HE20 MCS11: -68dBm

11ax HE40 MCS0: -95dBm, 11ax HE40 MCS11: -66dBm

11be EHT20 MCS13: -61dBm, 11be EHT40 MCS13: -59dBm

5 GHz:

11ax HE20 MCS0: -96dBm, 11ax HE20 MCS11: -66dBm

11ax HE40 MCS0: -94dBm, 11ax HE40 MCS11: -64dBm

11ax HE80 MCS0: -91dBm, 11ax HE80 MCS11: -61dBm

11ax HE160 MCS0: -88dBm, 11ax HE160 MCS11: -58dBm

11be EHT20 MCS13: -59dBm, 11be EHT40 MCS13: -57dBm

11be EHT80 MCS13: -55dBm, 11be EHT160 MCS13: -52dBm

[†]Maximum wireless signal rates are the physical rates derived from IEEE Standard 802.11 specifications. Actual wireless data throughput, wireless coverage, and connected devices are not guaranteed and will vary as a result of internet service provider factors, network conditions, client limitations, and environmental factors, including building materials, obstacles, volume and density of traffic, and client location.

[‡]Lower Latency refers to the latency improvement of Wi-Fi 7 routers compared to Wi-Fi 6/6E routers, based on laboratory test data. The test conditions had the same 5 GHz or 2.4 GHz single-frequency wireless interference and tested the maximum latencies of Wi-Fi 7 clients (with MLO turned on) connecting to the 5 GHz and 2.4 GHz bands of Archer BE230 (with MLO turned on) simultaneously and to the 5 GHz or 2.4 GHz bands of a Wi-Fi 6/6E router (without the MLO function).

[‡]Higher capacity and lower latency refers to the capacity and latency improvement of Wi-Fi 7 routers compared to Wi-Fi 6/6E routers, based on laboratory test data.

[§]2.5 Gbps internet speeds require compatible service plans and equipment. Actual network speed may be limited by the rate of the product's Ethernet WAN or LAN port, the rate supported by the network cable, internet service provider factors, and other environmental conditions.

[¶]Use of WPA3 requires clients to also support the corresponding feature.

[◇]Use of Wi-Fi 7 (802.11be), Wi-Fi 6 (802.11ax), and features including Multi-Link Operation (MLO), 4K-QAM, Multi-RUs, OFDMA, and MU-MIMO requires clients to also support the corresponding features.

^{*}Wi-Fi generations represent the wireless standard IEEE 802.11 a/b/g/n/ac/ax/be. All devices need to support 802.11 Wi-Fi protocols. Users may require an extra modem device that is compatible with their internet service provider to gain internet access.

^{**}HomeShield includes both basic and advanced features. Advanced features require a paid subscription. For details, visit tp-link.com/homeshield

^{***}TP-Link EasyMesh-compatible products can network with other devices that use EasyMesh. Failed connections may be due to firmware conflicts of different vendors. The EasyMesh-compatible function is still being developed on some models and will be supported in subsequent software updates.

This router may not support all the mandatory features as ratified in the IEEE 802.11be specification.

Further software upgrades for feature availability may be required.

©2024 TP-Link