

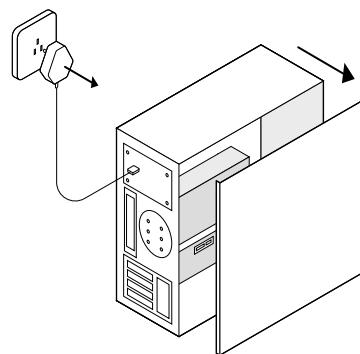
STEP 1 Hardware Connection

Quick Installation Guide

2.5 Gigabit PCI Express Network Adapter

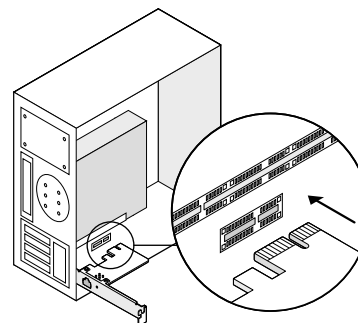
Images may differ from your actual product.

1. Turn off your computer, unplug the power cable and remove the case panel.

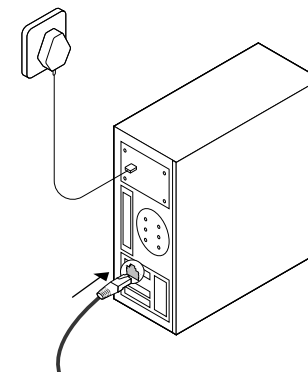


2. Locate an available PCI-E slot and carefully insert the adapter.

Note: If the bracket is not suitable for your computer, detach it from the adapter's board and replace it with the low-profile bracket.

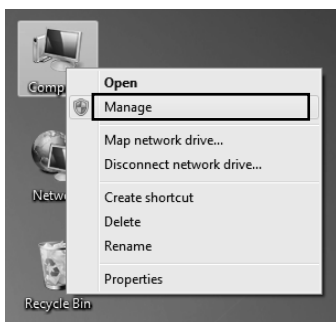


3. Reinstall the case panel, plug in the power cable and turn on your computer. Then connect the Ethernet cable to the adapter.

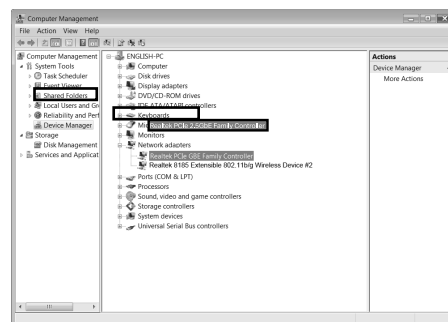


STEP 2 Driver Installation

1. Download the driver from <https://www.mercusys.com/download/ma310e/> and unzip the file.
2. Right-click **Computer**, and then click **Manage**.

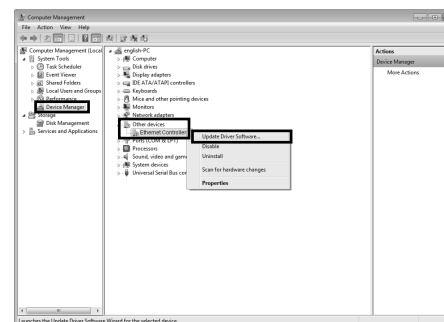


3. Open **Device Manager**. Go to **Network Adapters**, right-click **Realtek PCIe 2.5GbE Family Controller**, and click **Update Driver...**

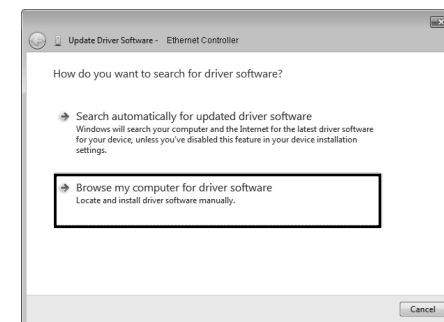


or

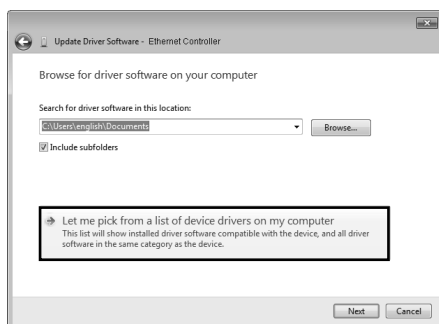
- Open **Device Manager**. Go to **Other Devices** and right-click **Ethernet Controller**; then click **Update Driver Software...**



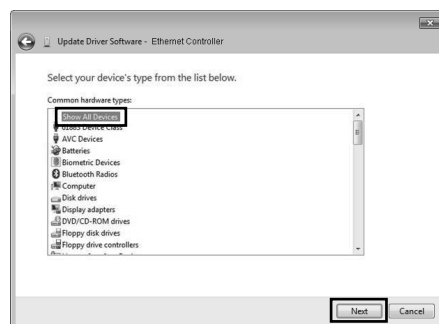
4. Select **Browse my computer for driver software**.



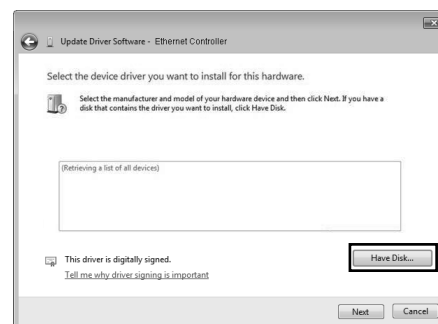
5. Select **Let me pick from a list of device drivers on my computer.**



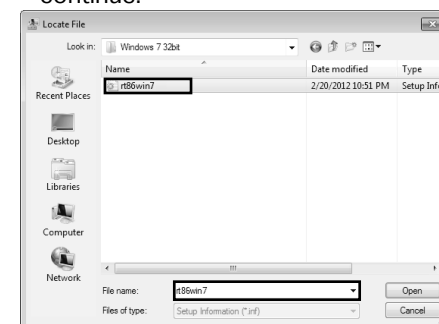
6. For Windows 7:
Choose **Show All Devices**, and then click **Next**.



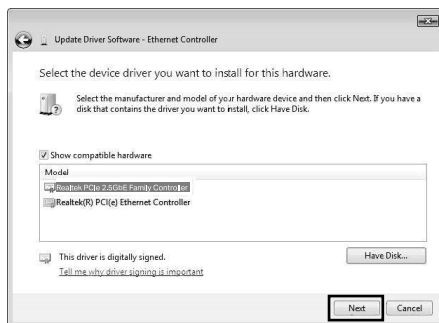
7. Click **Have Disk...**



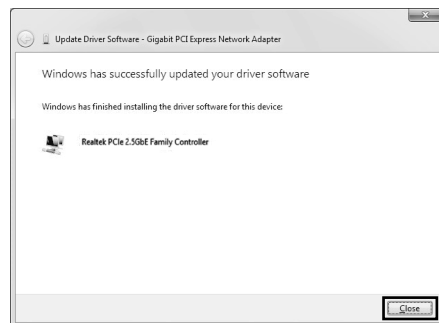
8. Click **Browse...** to go to **Computer**, locate the MA310E Windows driver and choose the .inf file based on your Windows system. Then click **OK** to continue.



9. Select **Realtek PCIe 2.5GbE Family Controller**, and click **Next**.



10. Click **Close** when the driver is installed successfully. And then restart your computer to finish the installation.



LED Indicator

LED	Status
1000M/ 100M/10M Link	On: The adapter speed is negotiated to 1 Gbps/100 Mbps/10 Mbps, but no data transmission.
	Flashing: The adapter is working at 1 Gbps, 100 Mbps or 10 Mbps.
	Off: No link or the adapter is working at a different speed.
2.5G Link	On: The adapter speed is negotiated to 2.5 Gbps, but no data transmission.
	Flashing: The adapter is working at 2.5 Gbps.
	Off: No link or the adapter is working at a different speed.

Note: If neither LED flashes, check whether the adapter is detected by the computer or the driver is successfully installed.

Troubleshooting

Q1: How can I find the hardware version of the adapter?

- The hardware version (Ver:X.Y) is printed on the product label on the package or the adapter. The number X is the hardware version of the adapter.
- For more detailed instructions, please visit <https://www.mercusys.com/faq-633.html>

Q2: What should I do if my computer cannot find the new hardware?

- Restart your computer and try again.
- Power off the computer, then reinsert the adapter or try another PCI-E slot.
- If the problem persists, contact our Technical Support.

Safety Information

- Do not attempt to disassemble, repair, or modify the device. If you need service, please contact us.
- Keep the device away from water, fire, humidity or hot environments.
- The device can be powered only by equipments that comply with Power Source Class 2 (PS2) or Limited Power Source (LPS) defined in the standard of IEC 62368-1.

Mercusys hereby declares that the device is in compliance with the essential requirements and other relevant provisions of directives 2014/30/EU, 2011/65/EU and (EU)2015/863. The original UK declaration of conformity may be found at <https://www.mercusys.com/support/ukca/>

Mercusys hereby declares that the device is in compliance with the essential requirements and other relevant provisions of the Electromagnetic Compatibility Regulations 2016 and Electrical Equipment (Safety) Regulations 2016. The original EU declaration of conformity may be found at <https://www.mercusys.com/en/ce>

Support

For technical support, user guides, the driver and more information, please visit <https://www.mercusys.com/support>.

