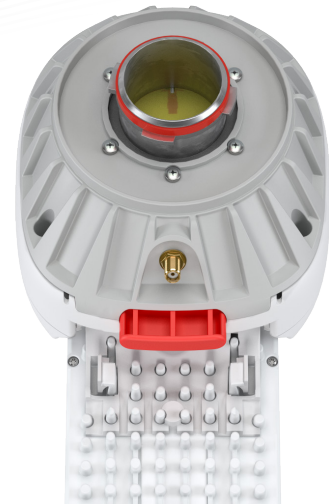


TwistPort™ Adaptor for airFiber® 5X

ADAPTOR FOR AIRFIBER® 5X

The TwistPort™ Adaptor for airFiber® 5X makes the Rocket® compatible with all TwistPort™ Antennas. TwistPort™ Adaptors are equipped with our original quick locking waveguide port. Connecting and disconnecting the airFiber® 5X from the TwistPort™ Adaptor is very simple and requires no tools.



TECHNICAL DATA

Antenna Connection	TwistPort - Quick Locking Waveguide Port
Radio Connection	2x Slide-On RP-SMA and 2x RP-SMA for GPS
Materials	Insert - Aluminium Alloy Adaptor - UV stabilized and weather resistant ABS plastic
Flame Rating	UL 94 HB
Temperature	-40°C to +60°C (-40°F to +140°F)
Wind Survival	160 km/h
Weight	0.42 Kg / 0.9 lbs* – single unit 0.52 Kg / 1.1 lbs* – single unit incl. package 12.5 Kg / 27.5 lbs* – carton (20 units)
Single Unit	Retail Box: 18.5 x 12.6 x 10.8 cm*
20 Units	Carton Box: N/A

*Estimation based on pre-production units. Subject to change.

PERFORMANCE

Frequency Range	5180 - 6400 MHz
Polarization	Dual Linear H + V
VSWR Max	1.8
Impedance	50 Ohm

COMPATIBLE WIRELESS PLATFORMS

RF elements®	any TwistPort™ Antenna
Ubiquiti Networks™	airFiber® 5X

PACKAGE CONTENTS

TwistPort™ Adaptor
Radio Mount Adapter

PRODUCT DIMENSIONS

